

Capital Asset Advisory Committee
2018 Capital Improvement Program
Financial Status May 31, 2020

June 4, 2020

2018 CAPITAL IMPROVEMENT PROGRAM – FINANCIAL STATUS 5/31/2020

Revenue

\$ (326,490,000)	First Bond Issuance
\$ (50,165,349)	Premium on First Bond Issuance
\$ (11,470,064)	Interest Through April 30
\$ (20,900,481)	Fiscal Year 2020 Capital Transfer (COP Principal & Interest Payment Removed)
\$ (409,025,894)	

Expenses

As of May 31, 2020

\$ 109,417,007	Total Expended - All projects
\$ 147,814,548	Total Encumbered - All projects

Charter Projects

\$ 24,524,558	Total Expended - Charter
\$ 2,251,911	Total Encumbered - Charter

Contracts on June 4th Board Agenda to be approved

As of April 30, 2020

\$ 101,618,815	Total Expended - All projects
\$ 115,984,409	Total Encumbered - All projects

\$ 24,296,466	Total Expended - Charter
\$ 626,675	Total Encumbered - Charter

\$ 0

2018 CAPITAL IMPROVEMENT PROGRAM – FINANCIAL STATUS 5/31/2020

Funding Breakdown 2018 Capital Improvement Program

\$	326,490,000	First Bond Issuance
\$	50,165,349	Premium on First Bond Issuance
\$	11,470,064	Bond Interest Through April 30, 2020
\$	20,900,481	FY 2020 Capital Transfer
\$	409,025,894	Funds to Date
\$	240,510,000	Estimated Second Bond Issuance
	TBD*	Premium on Second Bond Issuance
	TBD*	Future Bond Interest Earnings
\$	100,000,000	5 Years Capital Transfer
	TBD*	Interest on Capital Transfer
\$	749,535,894	Preliminary Total

TBD* To Be Determined

2018 CAPITAL IMPROVEMENT PROGRAM – FINANCIAL STATUS 5/31/2020

Additions, New Buildings & in Design to Bid Late Summer / Fall

Additions

Bell MS Addition

Foster ES Addition

Wayne Carle MS Addition

Manning K8 Addition

Parmalee ES Addition

New Building

CTE South

In Design

Pomona High School Addition/Renovation

Jefferson High School Addition/Renovation

Lumberg Elementary School Addition/Renovation

Fall Design Starts

Marshdale Elementary School Replacement

Prospect Valley Elementary School Replacement

Ralston Valley HS Addition/Renovation

Standley Lake HS Addition/Renovation

2018 CAPITAL IMPROVEMENT PROGRAM – FINANCIAL STATUS 5/31/2020

Under Construction:

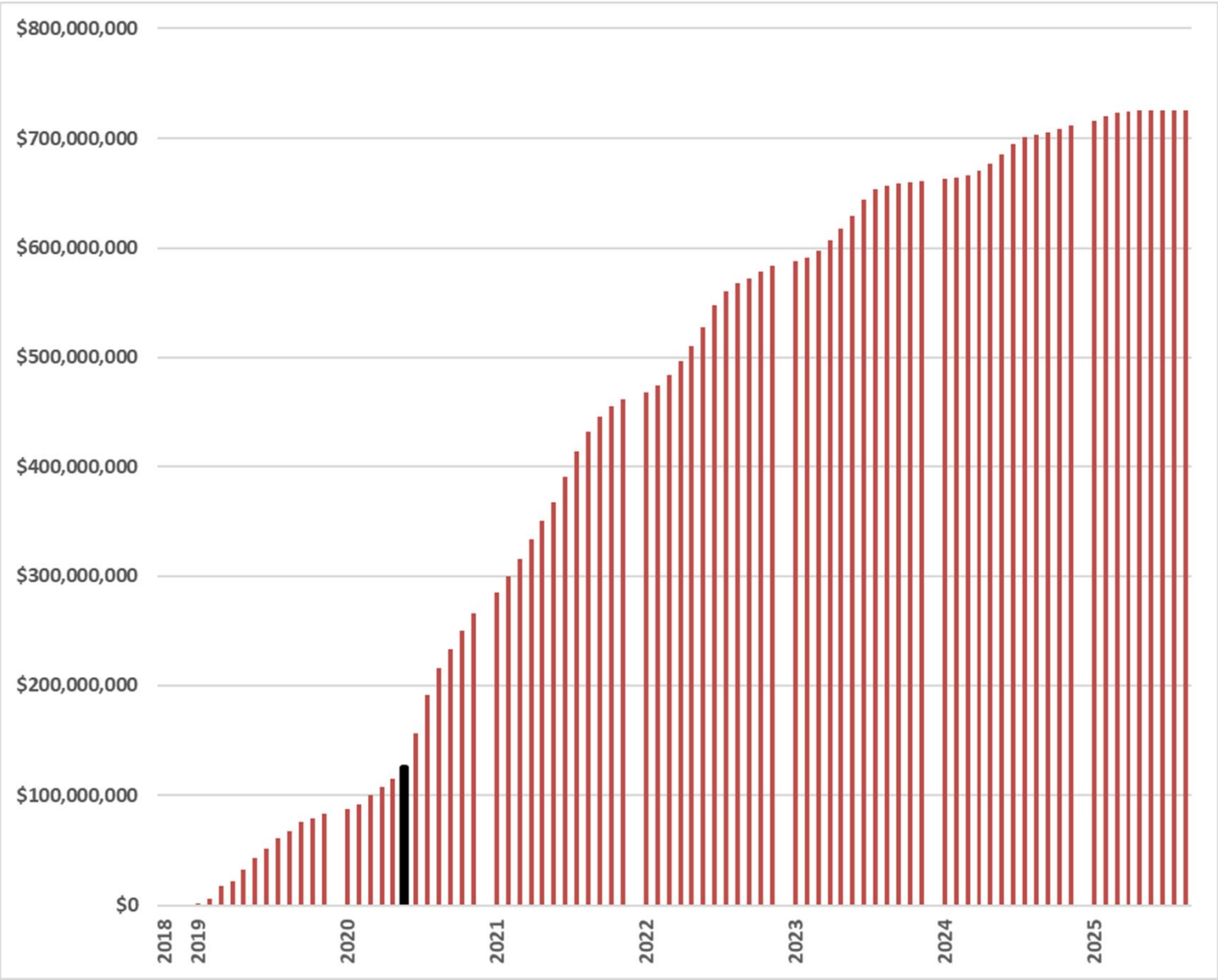
Arvada HS Addition / Renovation	Complete August 2020
Three Creeks K8 Addition	Complete May 2020
Wilmot ES Addition / Renovation	Complete August 2020
Kendrick Lakes ES Replacement	Complete December 2020
Columbine HS Addition / Renovation	Complete July 2021
Green Mountain HS Addition / Renovation	Complete July 2021
Conifer HS Addition / Renovation	Complete July 2021
6 HS Artificial Turf & Tracks	Complete August 2020
Alameda International Jr./Sr. High School	Complete August 2022

Furniture:

- 14 replacements
- Columbine HS Partial Replacement
- Green Mountain HS Partial Replacement

2018 CAPITAL IMPROVEMENT PROGRAM – FINANCIAL STATUS 5/31/2020

Cash Flow

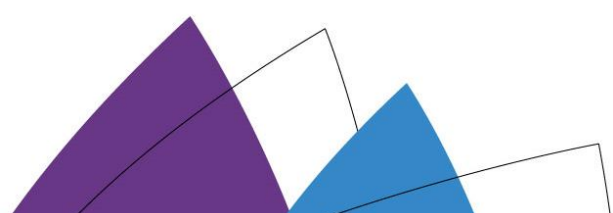


CAPITAL IMPROVEMENT PLAN – FINANCIAL STATUS 5/31/2020

Impact of COVID-19 Virus

To date there has been minimal impact from Covid-19 on the availability of labor or materials to on-going projects.

Projects in design or under construction are continuing normally.





CAAC Construction Update

6-4-2020



2020 - PROJECTS

58 of 88 Elementary Schools

11 of 15 High Schools

6 of 17 Middle Schools

2 of 2 7-12 Schools

2 of 6 K-8 Schools

7 of 18 Option Schools

1 of 4 Athletic Facilities

2

Alameda HS – Addition WOLD – CMGC Phipps



Construction
Documents
Estimate
\$26,437,475
163,635 SF
\$161.56 /SF
BOE 5/7

Conifer HS – Addition Cannon – CMGC FCI

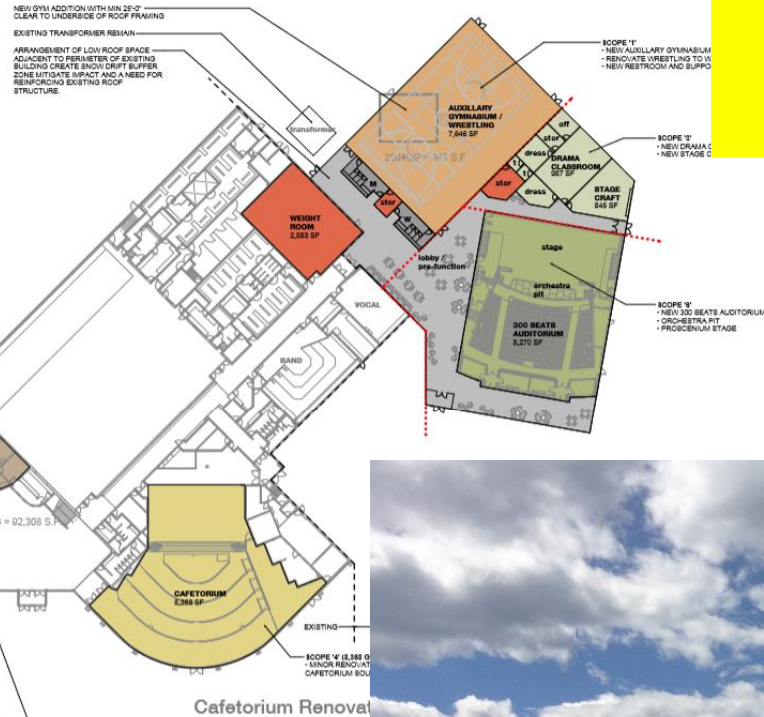
Construction
\$8,482,956
22,206SF
\$382/SF

LEGEND

- CLASSROOM
- CLASSROOM SUPPORT
- COUNSELING
- CAFETERIA
- DRAMA / AUDITORIUM / BLACK BOX
- DRAMA SUPPORT
- GYMNASIUM
- PHYSICAL ED SUPPORT
- LIBRARY
- LIBRARY SUPPORT
- ADMINISTRATION
- COMMONS / CIRCULATION
- RESTROOM

NOTE:

The footprint of the addition is influenced by the site constraints. There is a limited area at the east end of the building before the grade drops significantly. The remaining parking lot on the east side still needs access as well as the kitchen for deliveries and trash collection. All these parameters have been considered to shape the solution presented.



Green Mountain HS – Addition MOA – CMGC GE Johnson

Construction
\$10,455,825
73,971 SF
\$141.35/SF



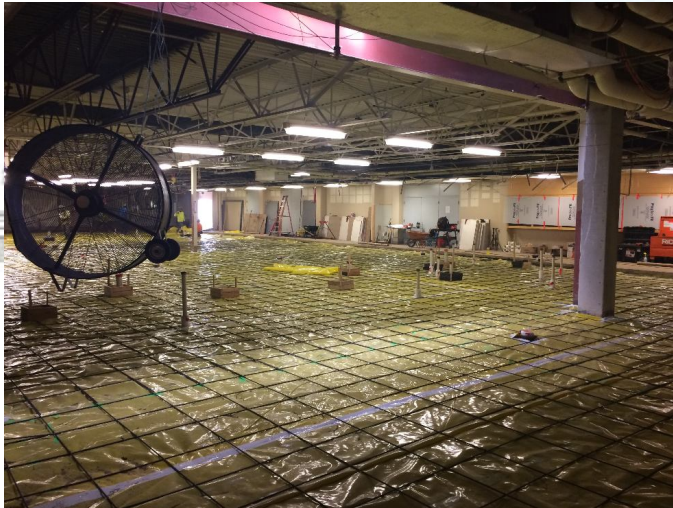
2020 HS Field Improvements Green Mountain HS HCM – CMGC ECI

Construction\$
4,027,821



Columbine HS – Addition EIDOS – CMGC Swinerton

Construction
\$14,185,271
124,765SF
\$114/SF



2020 HS Field Improvements

Columbine HS

HCM – CMGC ECI

Construction
\$2,985,029



2020 HS Field Improvements A WEST HCM – CMGC ECI

Construction
\$2,443,643



2020 HS Field Improvements Golden HS HCM – CMGC ECI

Construction
\$2,501,031



2020 HS Field Improvements Pomona HS HCM – CMGC ECI

Construction
\$2,971,103



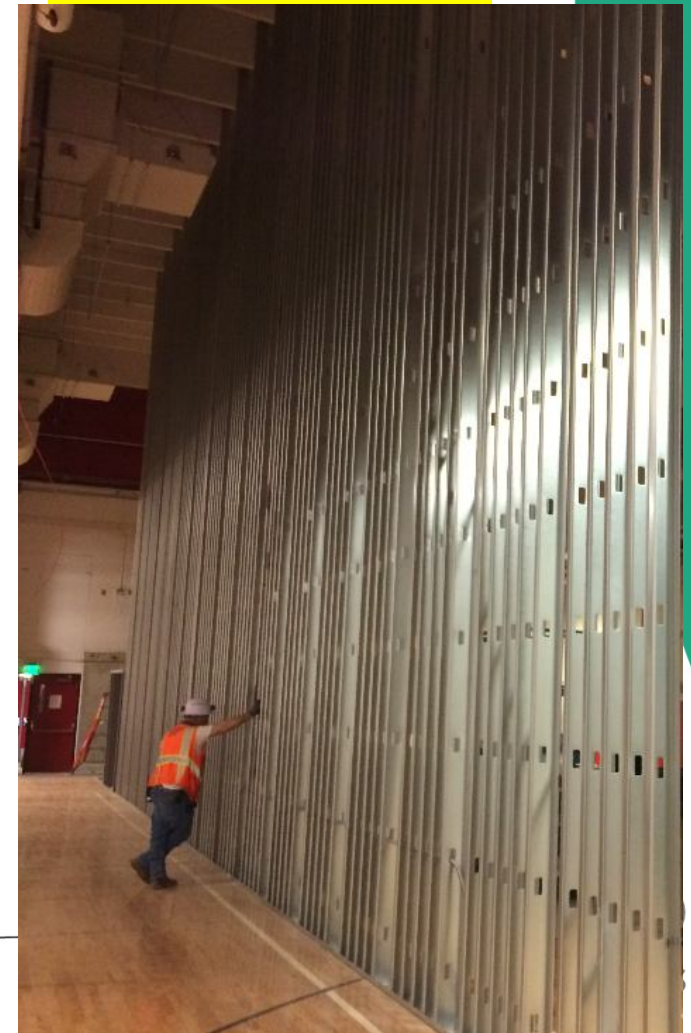
2020 HS Field Improvements
Standley LakeHS
HCM – CMGC ECI

Construction
\$3,014,278



Arvada HS - Addition HCM – CMGC Saunders

Construction
\$12,971,690
49,194SF
\$263.68/SF



Complete

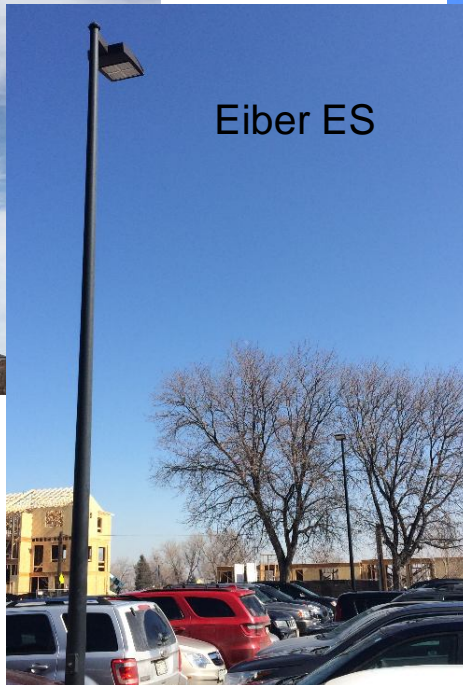
District Wide LED Site Lighting Ackerman – Piper Electric



Welchester ES



Foothills ES



Eiber ES



Ralston ES

Security Glass Installation 14 - Elementary Schools

Kyffin ES
Complete

Mitchell ES
Complete

Stevens ES
Complete

Thomson ES
85%

Peck ES
Complete

Warder ES
Complete

Secrest ES
Complete

Wilmore Davis
Complete

Grn Mtn ES
Complete

Elk Creek ES

Shelton ES
Complete

Edgewater ES

Slater ES
Complete

Shaffer ES



Security Camera Installations

Elementary Schools – Final Installations

Middle Schools – Starting



Temporary Classroom Removal (25)



Lawrence ES (2), Carmody (2), Weber (2), Governor's Ranch (4), Slater (4), Vivian (4) North Arvada MS (4), PEAK (3)

West Jefferson MS – Upgrades Cannon – CMGC FCI

Construction
\$1,366,534
17,000 SF
\$80/SF



Three Creeks K8 – Addition HCM – CMGC Phipps

Complete
\$4,589,755
15,137SF
\$303.21/SF
Punch List



Wilmot ES – Addition
DLR – CMGC Himmelman

Construction
\$6,694,785.
16,890SF
\$396.38/SF
August 2020
Completion



DW LED - 18 Schools

Ackerman - CMGC Weifield

Construction
\$2,735,735



1. Columbine Hills ES
2. Deane ES
3. **Devinny ES**
4. Dennison ES
5. Fitzmorris ES
6. Kullerstrand ES
7. Lasley ES
8. Maple Grove ES
9. Patterson International
10. **Peck ES**
11. **Powderhorn ES**
12. **Ryan ES**
13. Secrest ES
14. **Sheridan Green ES**
15. **Stott ES**
16. Vanderhoof ES
17. Westgate ES
18. **Westridge ES**

Kendrick Lakes ES – Replacement Larson Incitti – GC Roche

Construction
\$16,736,000
58,537 SF
\$286/SF

Dec. 2020
Completion



DW Roofing I – Green Mtn, Lasley WJE – CMC & United Materials



Construction
Green Mtn ES
\$739,250
10%

Lasley ES
\$255,700
Start 6/8

Bid 12/10/19

Chiller Replacement – Golden HS Columbine – K&M



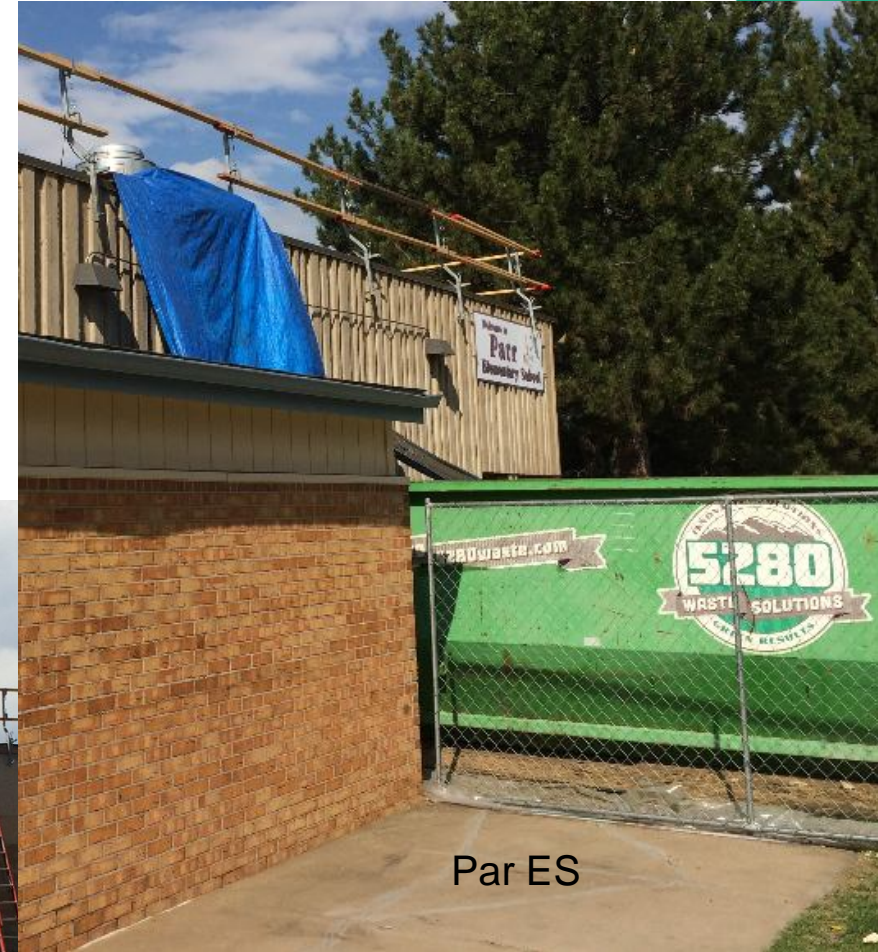
Complete
Golden HS
\$434,930
Bid 12/12/19
Startup 5/5

Construction

DW Roofing I - Patterson ES, Par ES, Thomas ES WJE -United Materials, Flynn



Patterson ES



Par ES



Thomas ES

DW Mechanical – Patterson ES
Columbine ES - Braconier



DW Mechanical – Stott ES RTU,
Columbine - Braconier



DW Mechanical – Ryan ES RTU

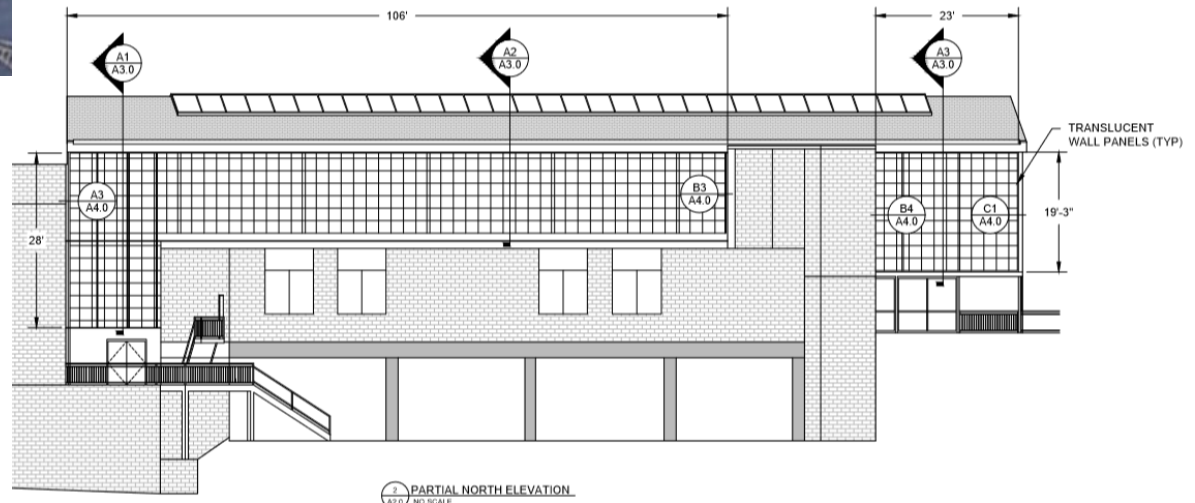
Columbine - Braconier



DW Roofing II – Kullerstrand ES, Carmody MS, Evergreen HS Rooftech – Grabau, B&M, Powers

Construction
\$193,082
KES
\$220,960
CMS
\$148,700
EHS

Bid 2/5/20



Trailblazer Locker Room & Press Box Mellin & Assoc. – WE O’Neal

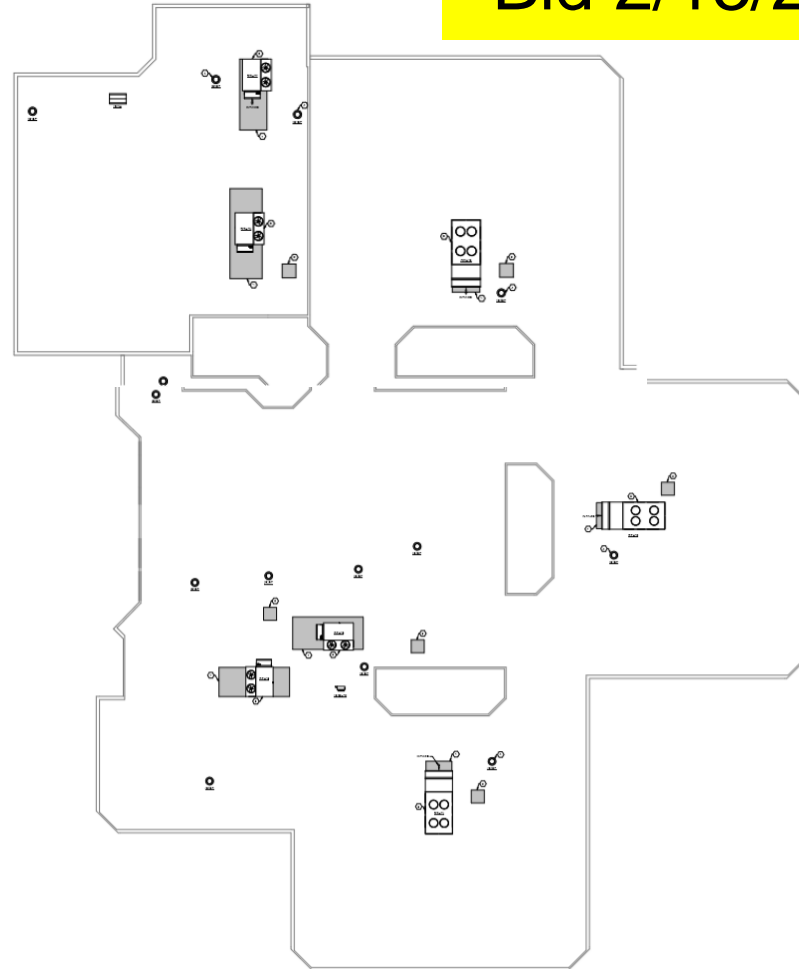
Construction
\$3,225,500
Bid 2/5/20



AHU Replacement - Westridge ES Branch Pattern - JCOR

Construction
\$1,276,720

Bid 2/13/20



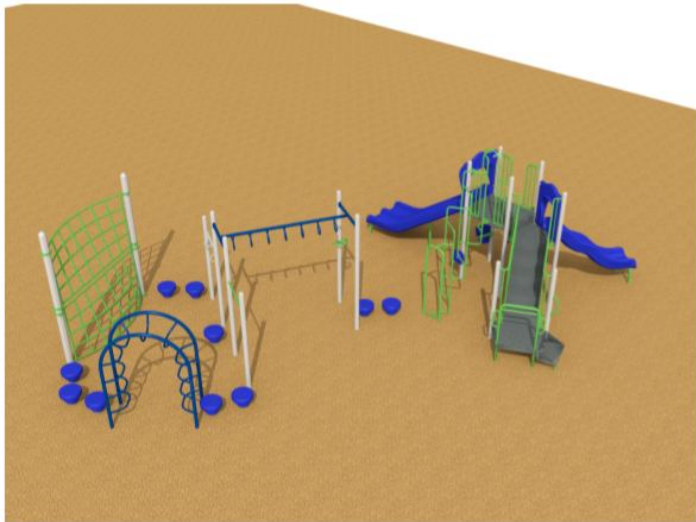
DW Playgrounds (9) Sites

- 1 - (Allendale, Stott, Vanderhoof) Richdale
- 2 - (Kendallvue, Stony Creek, Westridge) T2
- 3 - (Sheridan Green, Fletcher Miller) Goodland

Construction
\$1,081,847

Bid 2/25/20

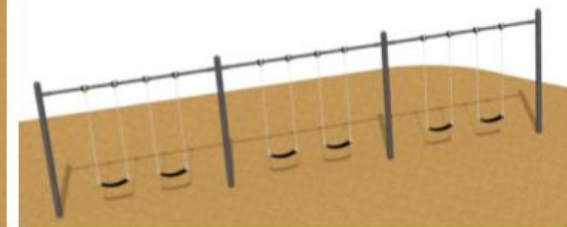
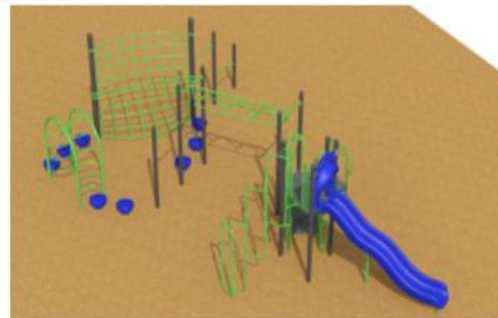
Design Concepts – Richdale, T2 & Goodland



① KENDALLVUE PLAY STRUCTURE
Scale: NTS



① GAMETIME PLAY EQUIPMENT AT FLETCHER MILLER SCHOOL



② LITTLE TIKES PLAY EQUIPMENT AT SHERIDAN GREEN ELEMENTARY SCHOOL

Eiber ES AMD - Himmelman



Construction
Eiber ES
\$989,700
\$19/SF
Bid 2/28/20



Belmar ES AMD - Palace Construction

Construction
Belmar ES
\$570,390
\$14/SF



DW Paving I -

Columbine Hills ES
Lawrence ES

Dadey -

Straightline

Construction
C Hills
\$75,000

Lawrence
\$125,000

Bid 3/4/20



Green Gables ES Upgrades Sybazz - Himmelman

Construction
\$1,127,500
\$28.88/SF

Bid 3/5/20



Hutchinson ES Upgrades Sybazz - Himmelman



Construction
\$1,347,800
\$33.39/SF
Bid 3/5/20



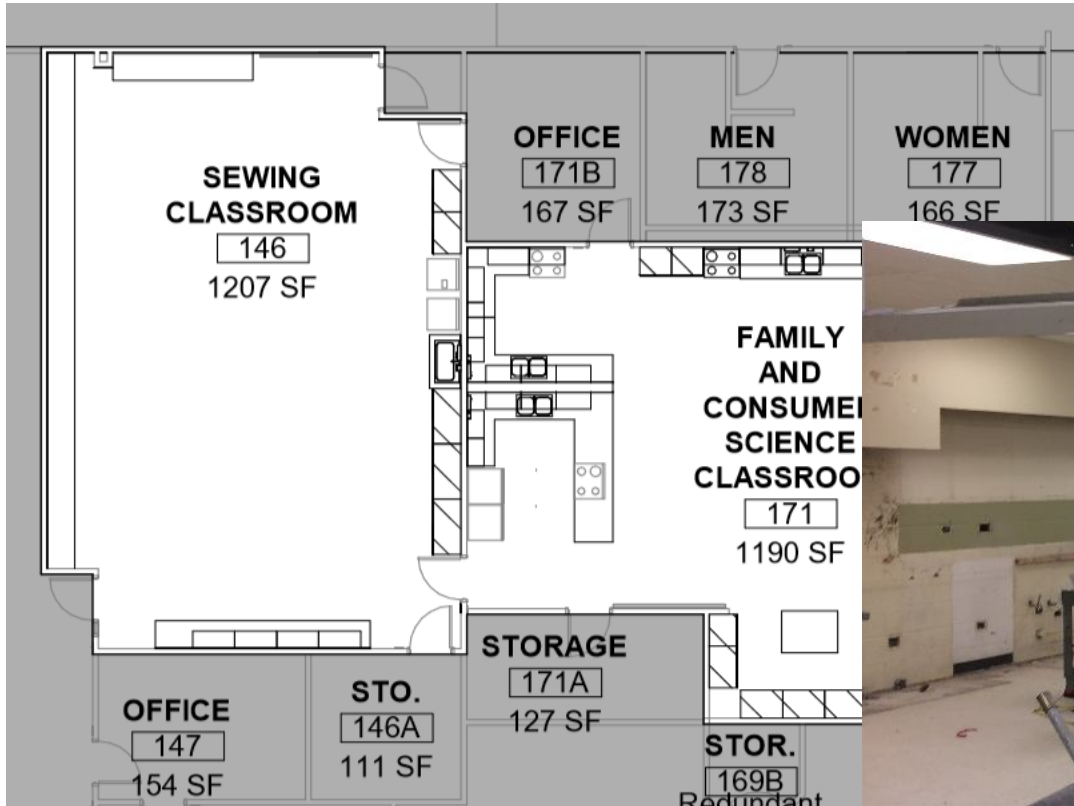
Ken Caryl – Signage & FACS Room Upgrades

HCM – Single Track

Construction
\$299,534
2,397 SF

\$124.96/SF

Bid 3/10/20



Dutch Creek ES – Upgrades

Cunningham Group – HPM

Construction

\$1,041,909

\$20.93/SF

Bid 3/10/20



Adams ES – Upgrades RB+B – Palace Construction

Construction
\$726,275
\$14/SF

Bid 3/12/20



Lukas ES – Upgrades

RB+B – Palace Construction

Construction
\$899,016
\$10/SF

Bid 3/12/20



Semper ES - Upgrades

RB+B – Palace Construction

Construction
\$1,243,428
\$23/SF

Bid 3/12/20



Witt ES – Upgrades

RB+B – Palace Construction

Construction
\$1,497,202
\$34/SF

Bid 3/12/20



DW Paving II – Bradford Int, Ryan, Mitchell, Shelton JVA – Martin Marietta Materials

**Construction
Bid 3/18/20
\$462,235**



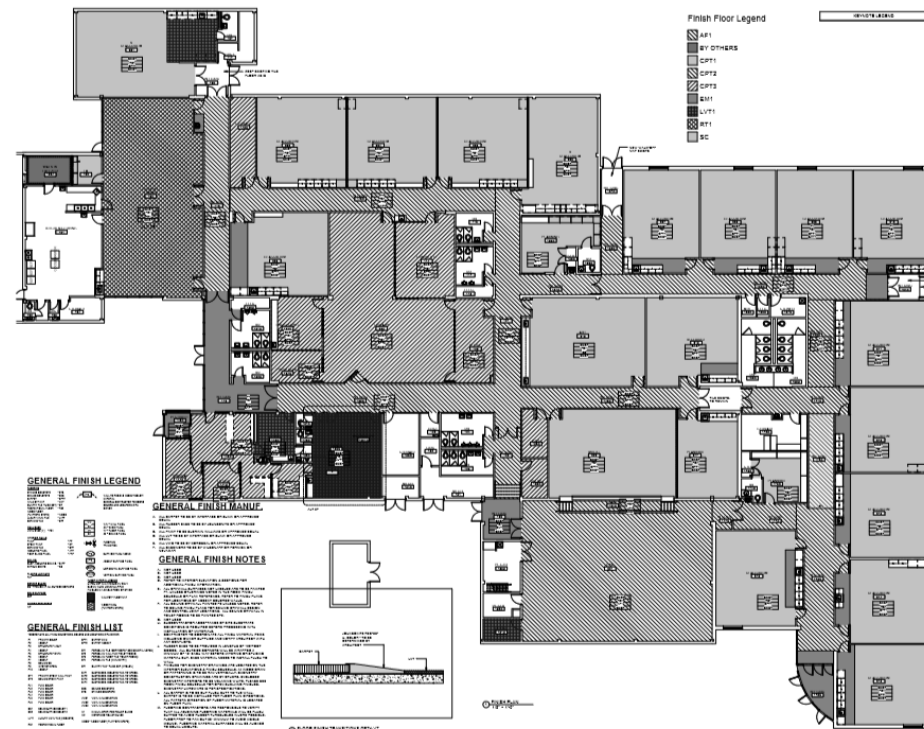
Ralston ES, Upgrades CRP – HPM

Construction
Bid 3/19/20
Ralston ES
\$709,860
\$13.84/sf



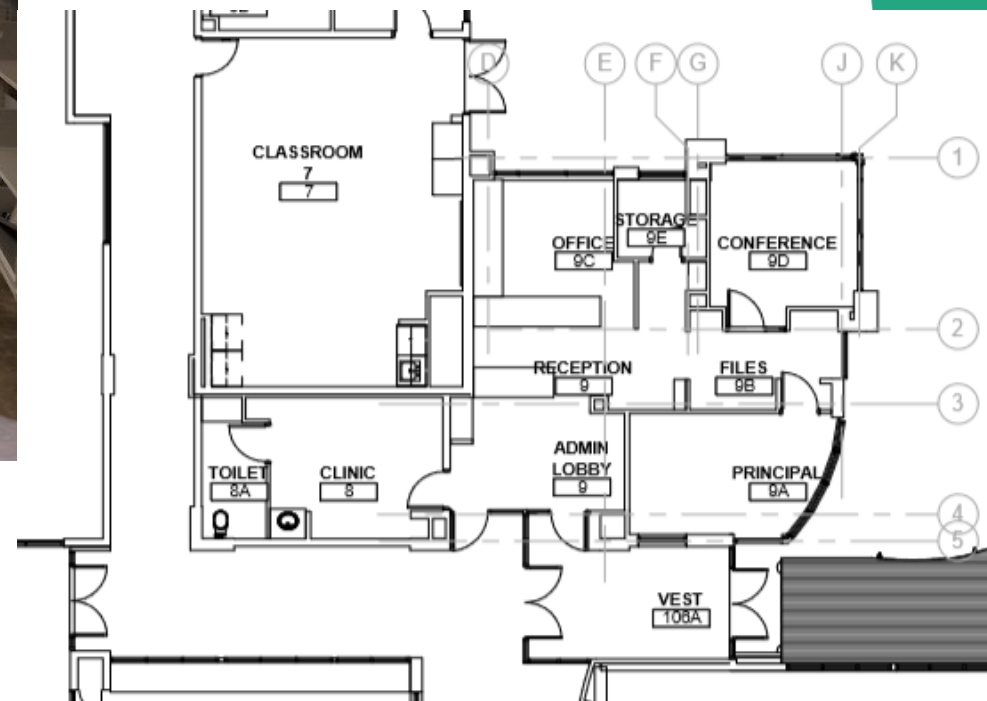
Foothills ES ES Upgrades CRP – Bryan

Construction
Bid 3/19/20
Foothills ES
\$801,900
\$20.05/sf



Vivian ES Upgrades CRP – Bryan

Construction
Bid 3/19/20
Vivian ES
\$1,301,278
\$34.39/sf



Welchester ES Upgrades CRP – Bryan

Construction
Bid 3/19/20
Welchester
\$1,355,918
\$32.21/sf



DW Flooring I - Fletcher Miller, Lasley ES, Free Horizon & Fitzmorris Farnsworth Group - HPM Contracting

Construction
Bid 3/24/20
\$498,493



Fletcher Miller

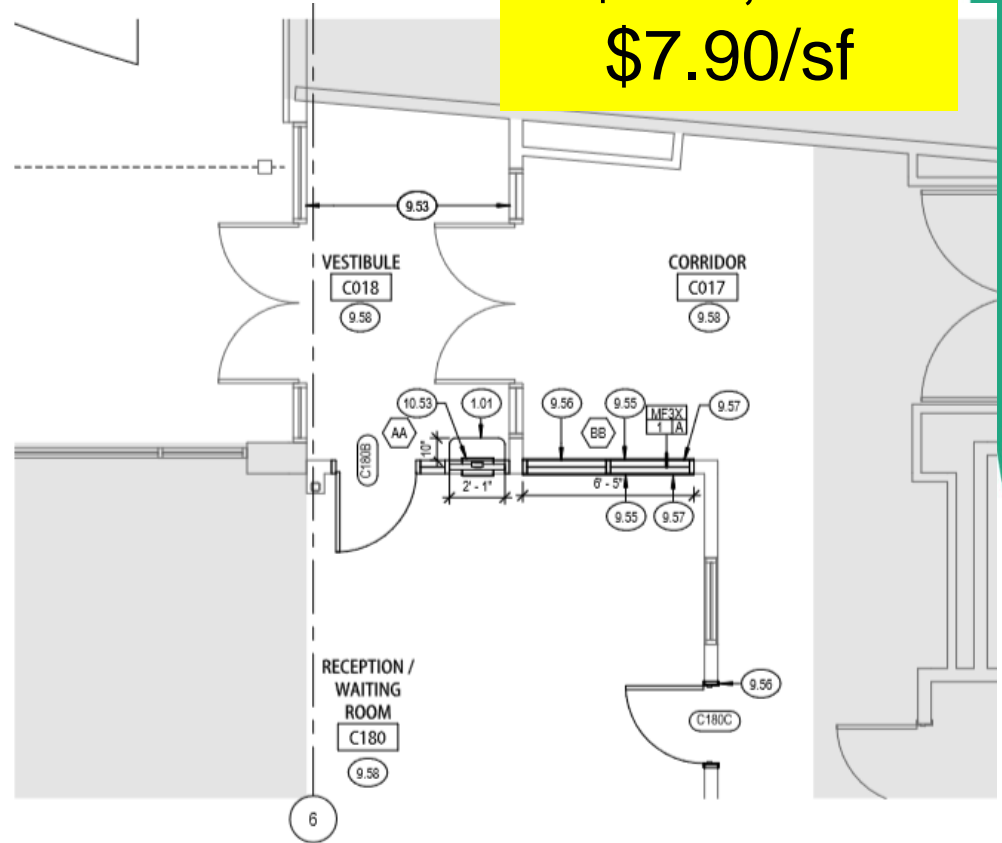


Free Horizon

Hackberry Hill ES Upgrades

RTA - GH Phipps

Construction
Bid 3/24/20
H Hill ES
\$414,040
\$7.90/sf



1 FLOOR PLAN - SECURITY VESTIBULE
A111 1/4" = 1'-0"



Arvada K8, Upgrades RTA – GH Phipps

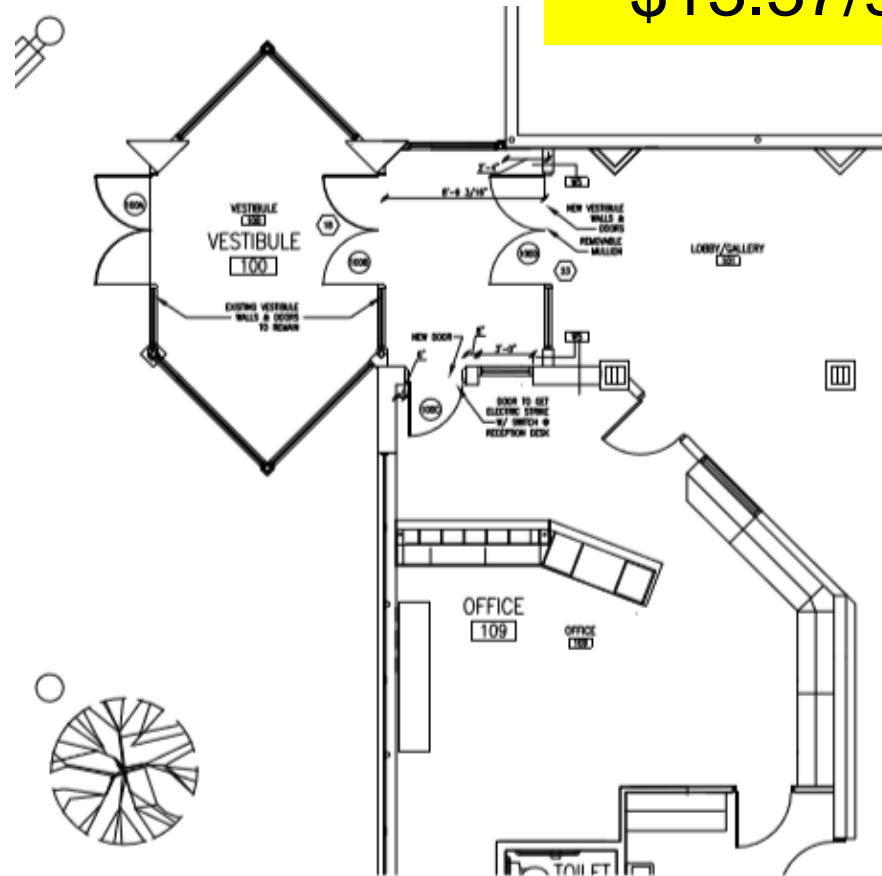


Construction
Bid 3/24/20
Arvada K8
\$1,354,112
\$5.31/sf

Fremont ES – Upgrades

Jordin – P.G. Arnold

Construction
Bid 3/25/20
\$870,763
\$13.37/sf



A1 VESTIBULE PLAN
1/4"=1'-0"

Coronado ES Upgrades

OZ – W.E. O’Neil

Construction
Bid 3/27/20

\$1,657,000
\$35.60/sf



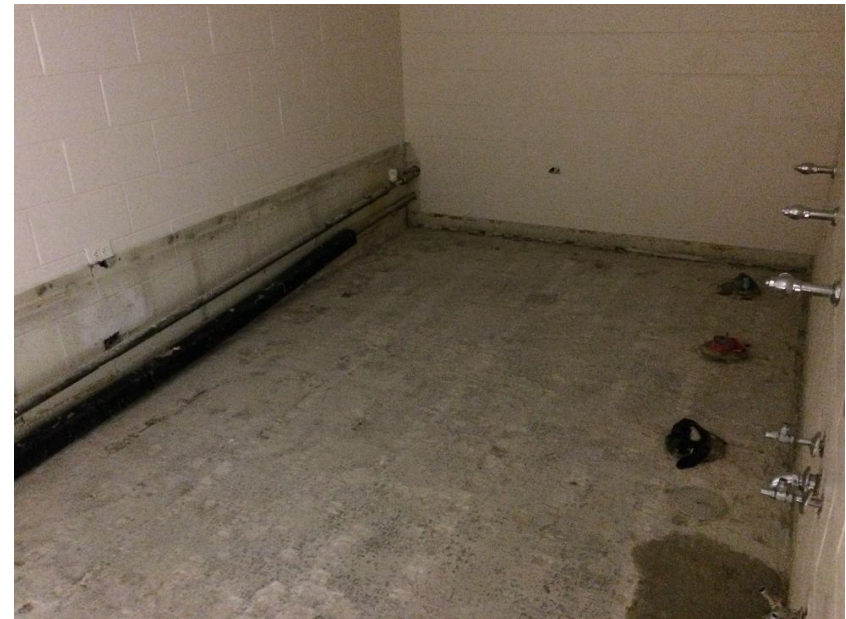
Columbine Hills ES Upgrades

OZ – W.E. O'Neil

Construction
Bid 3/27/20

\$676,000

\$14.30/sf



Stober ES Upgrades

LOA – Golden Triangle

Construction
Bid 4/9/20
\$2,665,600
\$72.63/SF



Construction
Bid 4/23/20
\$263,480

DW Flooring II - Allendale ES,
Thomson ES, West Woods ES gym
Fairmount gym & corridor
EUA – Colorado Floorworks (FES) – Gary Leimer



In Design

New Construction & Additions

- START Construction SUMMER / FALL 2020

Bell MS – 1 Story, 4 Classroom Addition Eidos – Contractor TBD

Construction Documents
Bid July



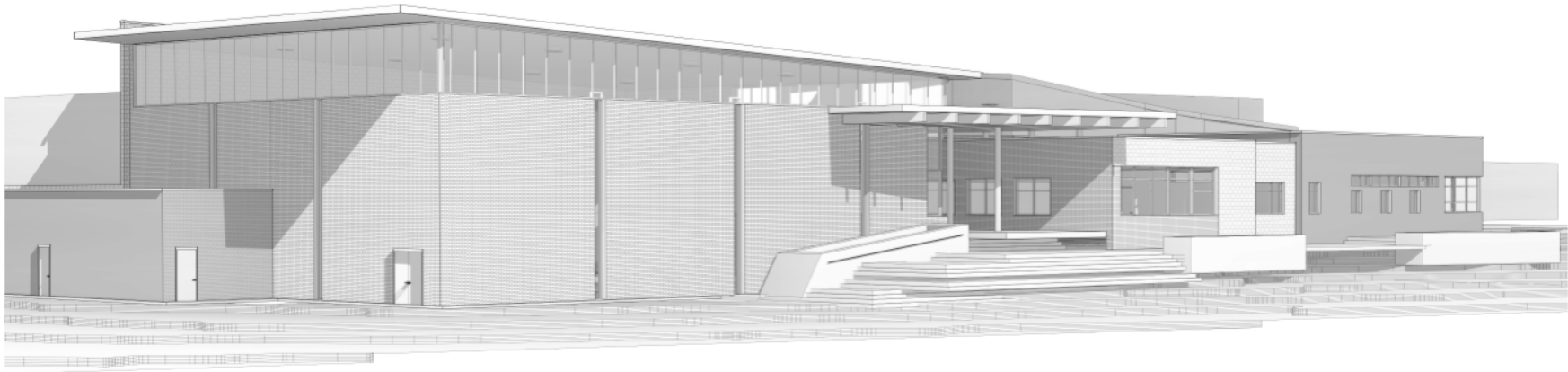
CTE South – New Building HCM – Contractor TBD

Construction Documents



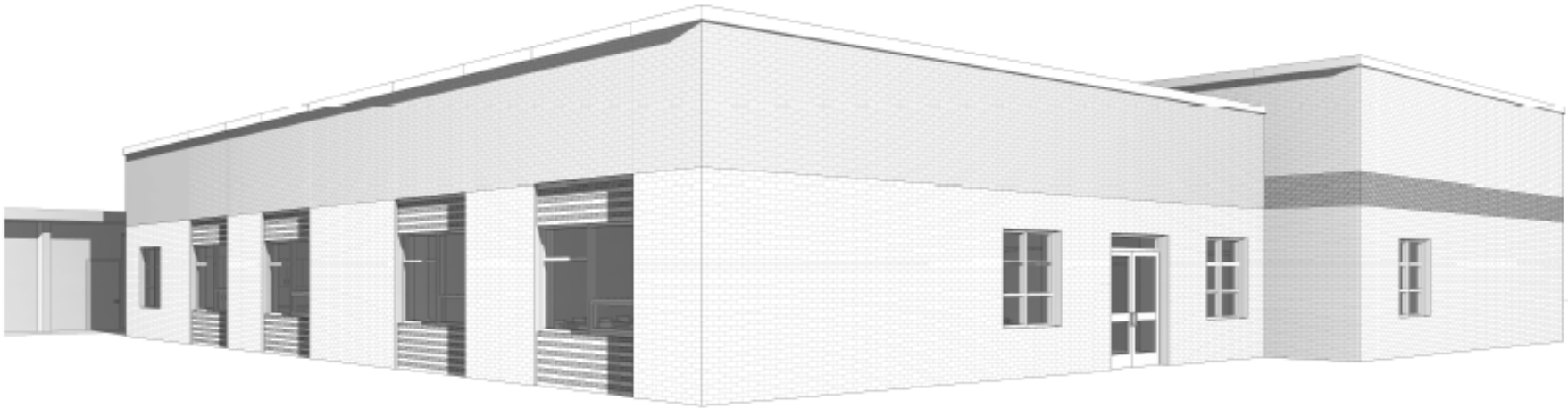
Jefferson HS – Aux Gym Addition MOA – Haselden

Construction Documents



Lumberg ES – 4 CR Addition MOA – CMGC Haselden

Construction Documents



Manning Opt – 1 Story –
7 Classroom Addition
AMD – Contractor TBD

Construction
Documents
Bid July



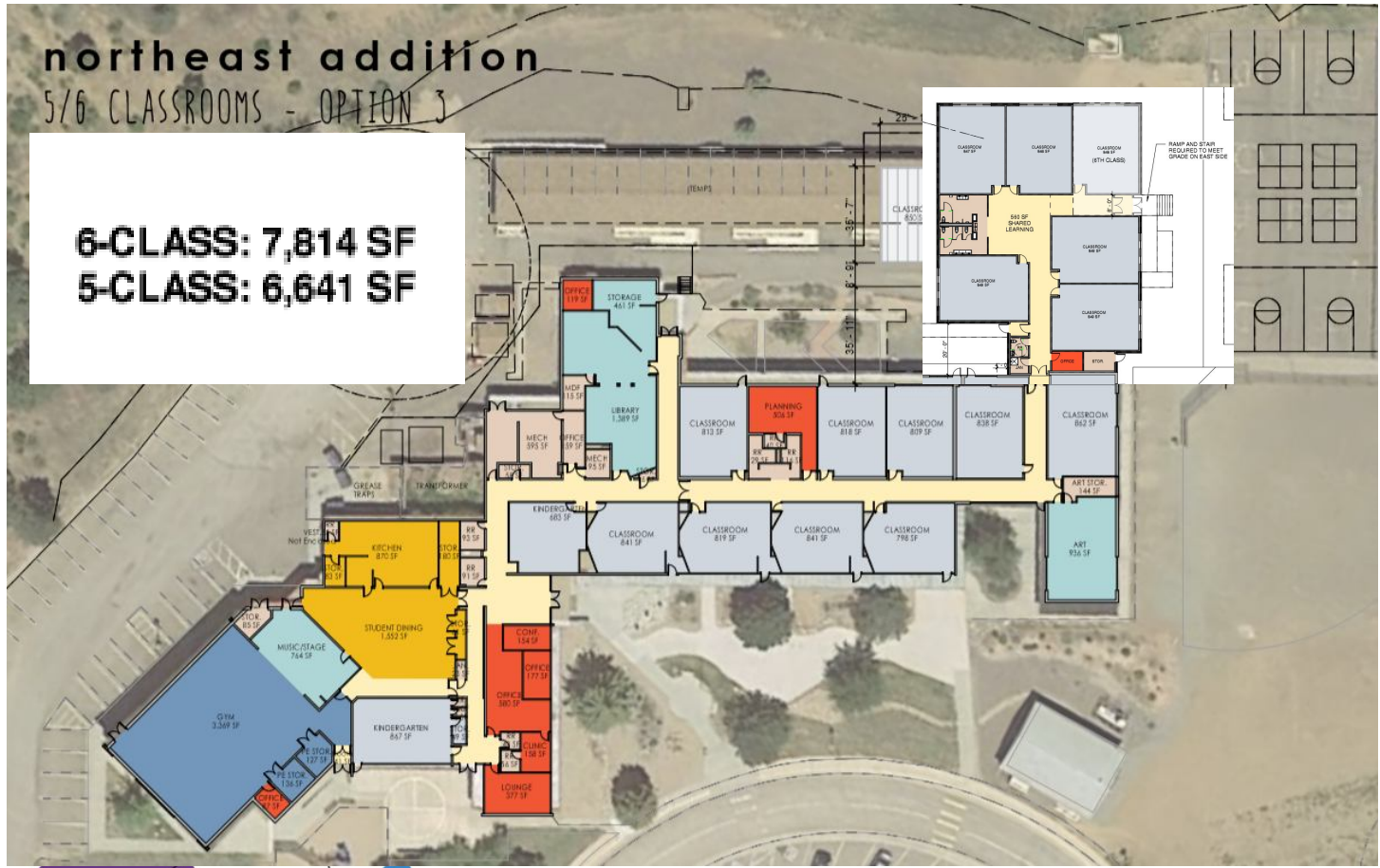
Wayne Carle – 2 Story – 8 Classroom Addition RB+B – Contractor TBD

Construction Documents



Parmalee ES – 1 Story – 5/6 Classroom Addition OZ – Contractor TBD

Construction Documents
Bid August



Foster ES – 1 Story – 7 Classroom Addition Larson Incitti – Contractor TBD

Design
Development



2021 Projects (On Deck)

- DW Elevator
- DW Flooring
- DW LED
- DW Mechanical
- DW Paving
- DW Playgrounds
- DW Roofing
- DW Athletic Turf
- Allendale ES
- Carmody MS
- Chatfield HS
- Dakota Ridge HS
- Deane ES
- Dennison ES
- Devinny ES
- Evergreen MS
- Evergreen HS
- Everitt MS
- Fitzmorris ES
- Kullerstrand ES
- Lasley ES
- Lawrence ES
- Maple Grove ES
- **Marshdale ES**
- Miller Special OPT
- Patterson ES
- Pomona HS
- Powderhorn ES
- **Prospect Valley ES**
- Ralston Valley HS
- Ryan ES
- Sheridan Green ES
- Standley Lake HS
- Stott ES
- Vanderhoof ES
- Westridge ES

Furniture

- Kullerstrand
- Ryan
- Eiber
- Kyffin
- Belmar
- AIHS
- Arvada HS
- Green Gables
- Dutch Creek
- Hutchinson
- W. Jeff MS
- Maple Grove
- Arvada K8
- Ken Caryl MS
- Summit Ridge MS
- Arvada HS
- NAMS
- Moore MS

Next Meeting 7/2/20

2018 BOND PROGRAM COMMUNICATIONS UPDATE

CAPITAL ASSET ADVISORY COMMITTEE

JUNE 2020

COMPLETED WORK:

- Organized Green Mountain H.S. "virtual" groundbreaking:
 - Ran Facebook live for event
 - Helped produce video "[The Heart of this Community](#)"
- Continued production of bond signs
- Working on updating our annual report that will be completed and shared next week

Website analytics:

Jeffcobuilds.org and all pages with "jeffco builds" in the URL (ie sub-pages)

Jeffco Builds page performance	Page views	Unique page views
April 2020	1,377	1,081
May 2020	1,893	1,159
% change	37% increase	7% increase

UPCOMING WORK:

- Planning additional "virtual" events for this summer:
 - Groundbreakings and site tours to celebrate progress
- Writing and producing annual report for 2020 with a preview to our summer projects
 - Will be published next week!
- Sharing summer progress via social media

